

## M series key panel

Product series	Product name	Product model
M series smart panel(Metal cover, plastic shell)	4-key metal smart panel	YC.KP.04M.485
	6-key metal smart panel	YC.KP.06M.485

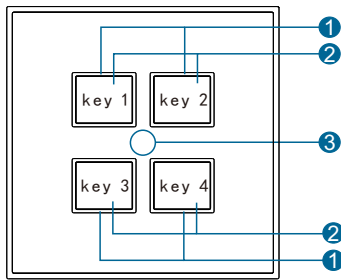
## Product Manual

Release : Oct 13, 2021

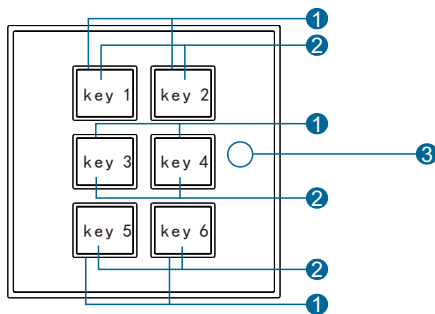
Version : V1.1



Firgue1.4-key metal smart panel Firgue2.6-key metal smart panel



Firgue3.4-key metal smart panel



Firgue4.6-key metal smart panel

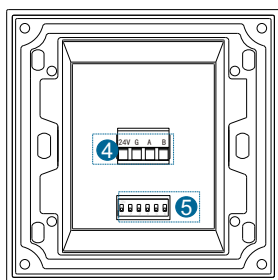


Figure 5. Back view

## Product Overview

4/6 key metal smart panel (see Figure 1-2), standard 86 bottom box installation, support seamless connection, can be matched with a variety of materials and colors of the panel, provide 4/6 key panel, reset type touch switch, mature structure, stable performance, high light process.

## Function Description

- Standard 86 bottom box installation, support multiple panel seamless cascading.
- Provide 2/4/6 programmable keys, ICONS can be carved or text screen printing.
- Can trigger short press, short press release, long press and long press release button to control lighting, curtains, scene functions, etc.
- Comes with panel backlight to manually adjust function keys to adapt to dif
- Each key with background color LED and activation color LED, color can be customized.
- Supports online firmware updates.
- Supports RS485 BUS communication.

## Precautions

- Use CAT5E or RVV4\*0.75 four-core wire for bus wiring.
- Do not connect the AB signal of the bus interface incorrectly, otherwise the bus signal will be abnormal.

## Product Information

Product Dimensions: See Figures 8 and 9

Installation opening size, see Figure 10 and 11

Product Information: See Figure 3-5

- Key trigger : Trigger conditions, can be set by software, short press, release, long press, when binding dimming, short press for switch, long press for dimming.
  - Indicator light: indicator light can be switched, dimming, timing, grouping, binding to synchronous, reverse display, no synchronous state, set by software. The indicator is off by default, When the key is pressed, the current key indicator will flash for a while, and the backlight will also light up (the backlight will go out after 30s). Note: The color of key indicator is white.
  - Bus anomaly: When the bus is abnormal, the panel key indicator 1 will keep flashing. At this time, it is necessary to eliminate problems such as line problems and address duplication.
2. Standby backlight setting and brightness
- Brightness: backlight color is orange, the default is 50% brightness.
  - Standby backlight Settings: Note: 4/6 key panel is key3 and key4.
- Example: 4-key and 6-key panels: Press key 3 and 4 at the same time, and the backlight will flashUnder, press key 4 to increase brightness, press key 3 to decrease brightness. After adjusting to the desired backlight standby effect, press button 3 and 4 again at the same time, and the backlight light flashes again. Note: this parameter can only be set by hardware, triggering the key 9.
3. Bus interface: 24V, G, A, B, and other bus interface cascade, do not connect the wrong (see Figure 7).
4. Address setting: the default address is 01, the address is set to 01-63 (decimal), using 6-bit dial, binary dial mode, setting mode (see Figure 6).

## Product Installation

See Figures 12

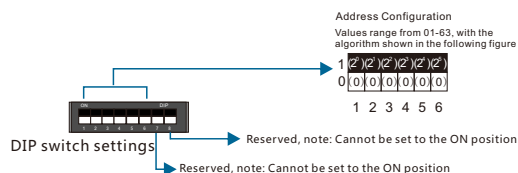
- Step 1. Disassembly port, use a small knife to pry the gap of the disassembly port can be removed, 4 disassembly port, same as above.
- Step 2. Mounting port, mounting screw with M4\*25, install to the appropriate position.
- Step 3. During installation, check whether the panel is installed in the wrong direction.
- Step 4. After installation, remove the key cover, align it with the hole, and install it properly.

## Safety Warning

- Tightening torque should not exceed 0.4 Nm.
- Installation location: Wall or distribution box
- Do not connect the RS485 BUS interface incorrectly, as it may damage the equipment.
- The RS485 BUS interface must not be connected to AC power; otherwise, it will damage all devices on the bus.
- Ensure a good ventilation environment.
- Do not expose to rain, contact with other liquids, or corrosive gases.

## Packing List

- Smart key panel\*1/User Manual\*1/Certificate of Conformity\*1



ID SET	1	2	3	4	5	6	7	8	ON	OFF
ID01										
ID02										
ID03										
ID04										
ID05										
ID06										
ID07										
ID08										
ID09										
ID10										
ID11										
ID12										
ID13										
ID14										
ID15										
ID16										
ID17										
ID18										
ID19										
ID20										
ID21										
ID22										
ID23										
ID24										
ID25										
ID26										
ID27										
ID28										
ID29										
ID30										
ID31										
ID32										
ID33										
ID34										
ID35										
ID36										
ID37										
ID38										
ID39										
ID40										
ID41										
ID42										
ID43										
ID44										
ID45										
ID46										
ID47										
ID48										
ID49										
ID50										
ID51										
ID52										
ID53										
ID54										
ID55										
ID56										
ID57										
ID58										
ID59										
ID60										
ID61										
ID62										
ID63										

Figure 6. Address DIP Switch Table

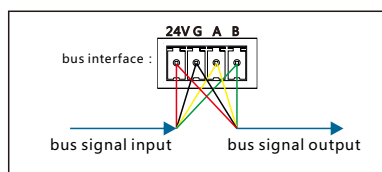


Figure 7. Description of bus interface wiring

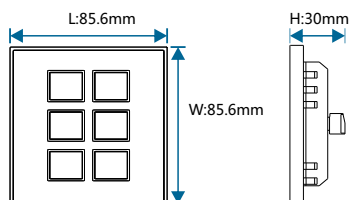


Figure 8. Dimensional Drawing - Front View

Figure 9. Dimensional Drawing -Sideview

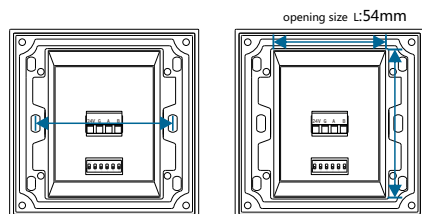


Figure 10.Installation hole position diagram

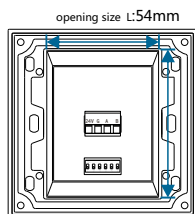


Figure 11. Opening size diagram

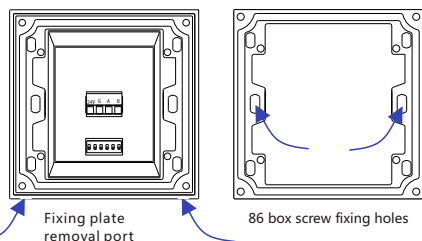


Figure 12. Disassembly and installation

## Technical support

Service Hotline: 86-18029750069

working hours: 9:00-12:00,13:00-18:00,From Monday to Friday)

Email:ceshi@easyctrlg.com

website: http://www.easyctrlg.com



2025 Guangzhou Easyctrl Intelligent Technology Co., Ltd. All rights reserved.  
This manual may be changed or updated without prior notice.

# Technical Parameters

## Basic Parameters

Operating Voltage	24VDC±10%
Maximum Power Consumption	YC.KP.04M ≤1W YC.KP.06M ≤1.1W
Number Of Keys	four/six keys
key Category	reset touch key
Key Indicator Light	white light
Backlight	orange light
Bus Interface	RS485 bus interface*1
Protection	IP20

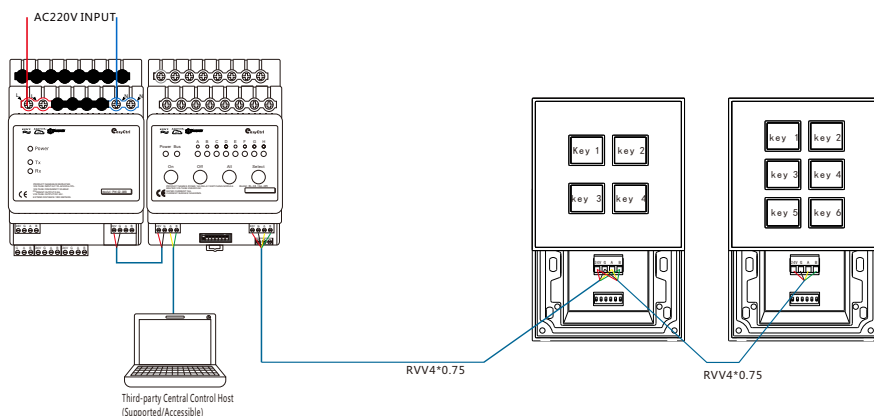
## External Environment

Operating Temperature	0℃~45℃
Operating Relative Humidity	20% ~ 93% RH
Storage Temperature	-20℃~55℃
Storage Relative Humidity	10% ~ 93% RH

## Product Specifications

Dimensions ( L*W*H )	85.6mm*85.6mm*30mm
Net Weight	YC.KP.04M ≤145g/pcs YC.KP.06M ≤150g/pcs
Enclosure Material	metal cover, plastic casing
Installation Method	standard 86 bottom box mounting(see Figure 12)
Opening Size ( L * W )	54mm*67mm , bottom box depth is greater than 40mm

## System Diagram



## Bus Specification

Bus interface	4-core wire : RVV4*0.75	UTP : CAT5/CAT5E
24V	RED	BROWN WHITE/BROWN
GND	BLACK	BLUE WHITE/BLUE
A	YELLOW	ORANGE WHITE/GREEN WHITE
B	GREEN	ORANGE/GREEN